



J E A N P E T I T

A R C H I T E C T E S.

A.



J E A N P E T I T
A R C H I T E C T E S.

A.

J E A N P E T I T
A R C H I T E C T E S.
A.

11 avenue du bois
L-1251 Luxembourg
EUROPE

P +11.352.47 13 22
F +11.352.47 32 53

architecture@jean-petit.lu
www.jean-petit.lu

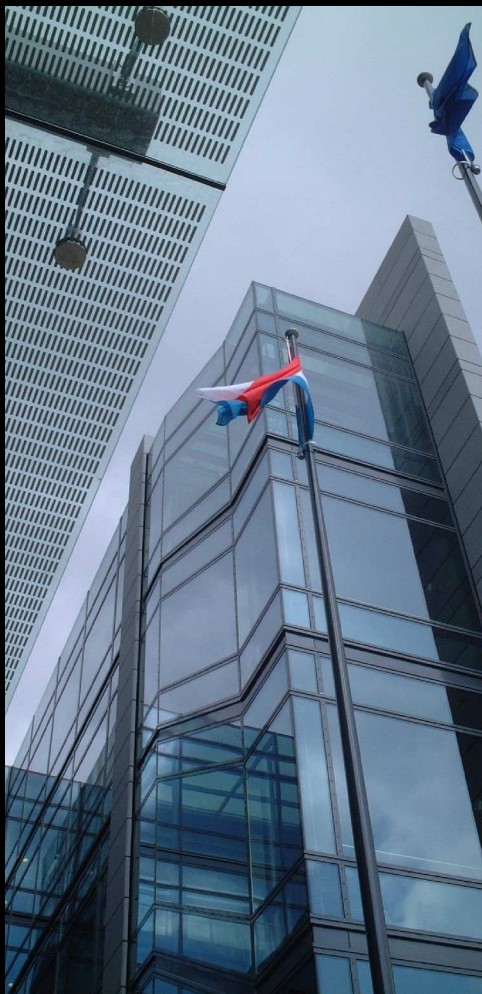
© 2012 by jpa s.a. - all rights reserved

For four decades since its inception in 1973, JEAN PETIT ARCHITECTES S.A. has grown into one of the leaders of architectural design and construction expertise in the culturally and economically wealthy Grand-Duchy of Luxembourg at the heart of Western Europe. Rooted in a family tradition of architects which stretches back to architect-director of the City of Luxembourg Nicolas Petit (1876-1953), the firm is currently owned and run by representatives of two generations of the Petit family. The firm's philosophy emerges from the convergence of a genuine respect for the cultural legacy of the European city and an explicit attention to the evolving demands of modern technology and lifestyle. JPA S.A. offers architectural design services in all stages of the conception and construction processes, and has consistently focused on high-end and sustainable residential, institutional, and corporate design, including prestigious and sizable projects for corporate clients like the Luxembourg Chamber of Commerce, the headquarters of the Banque Internationale à Luxembourg, the National Medical Laboratories of Luxembourg, as well as the landmark building of the national university campus, the DEXIA/RBC headquarters. JPA S.A. holds all human and technical resources to see through projects of interior design, architectural concept design & construction, as well as master planning. In addition, it has a successful track record of strategic, temporary alliances with French, German, Belgian, and Dutch design partners, as well as a close academic relationship to some of the world's most prestigious institutions of higher education in the United States.

Jean Petit
architecte diplômé EPFZ, Founding Principal & CEO

JEAN PETIT
ARCHITECTES
A.





JEAN PETIT
ARCHITECTES.
A.



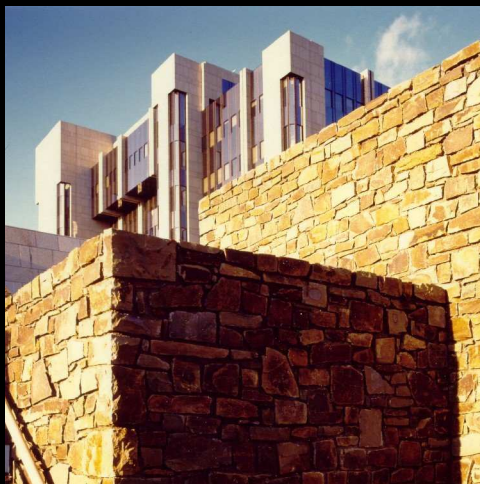
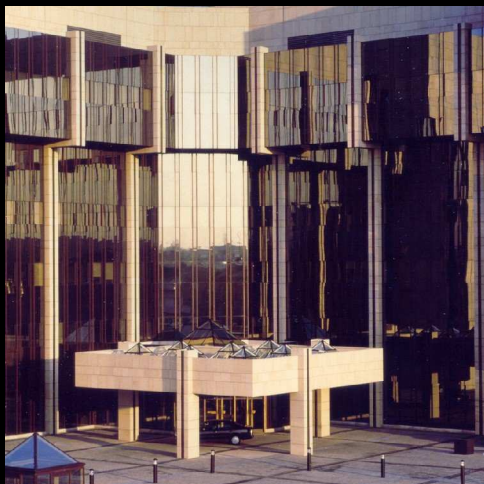


JEAN PETIT
ARCHITECTES.
A.





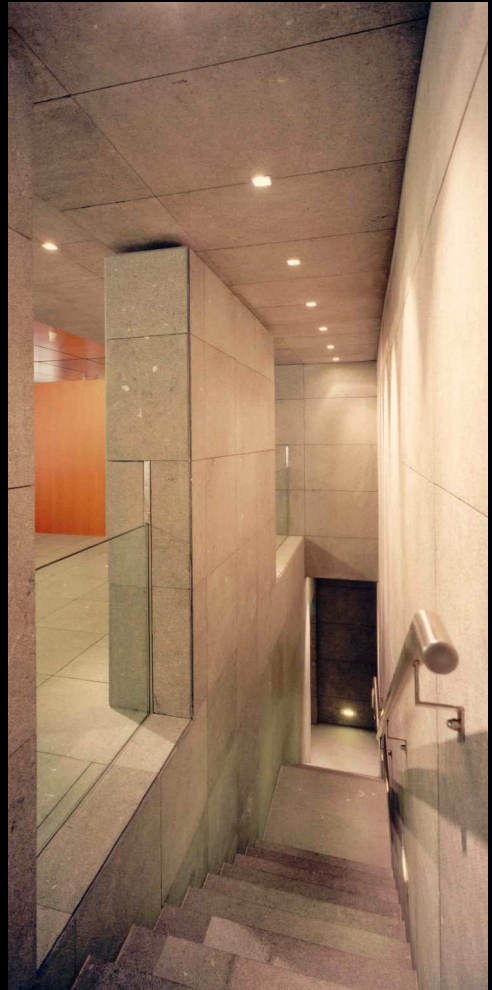
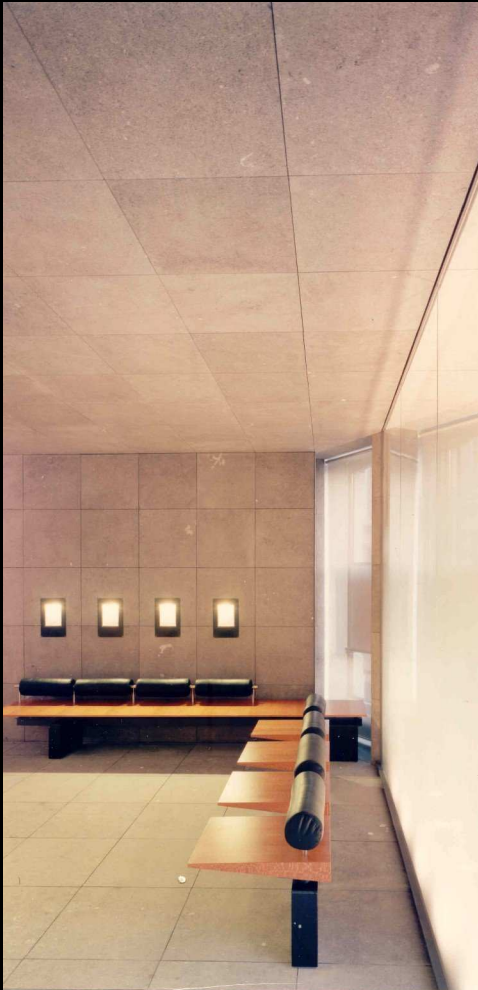
JEAN PETIT
ARCHITECTES.
A.





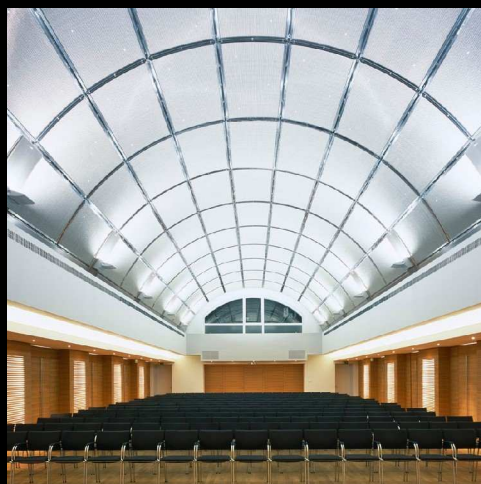
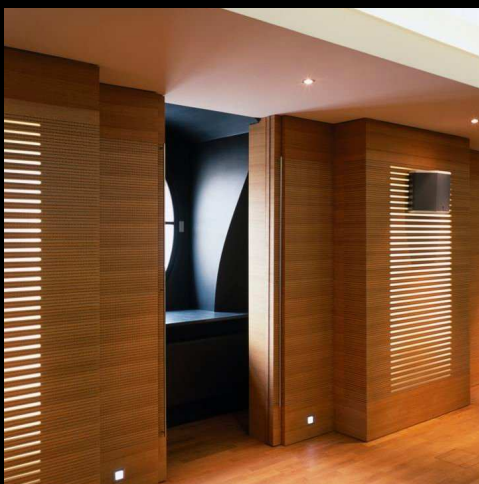
JEAN PETIT
ARCHITECTES.
A.





JEAN PETIT
ARCHITECTES.
A.

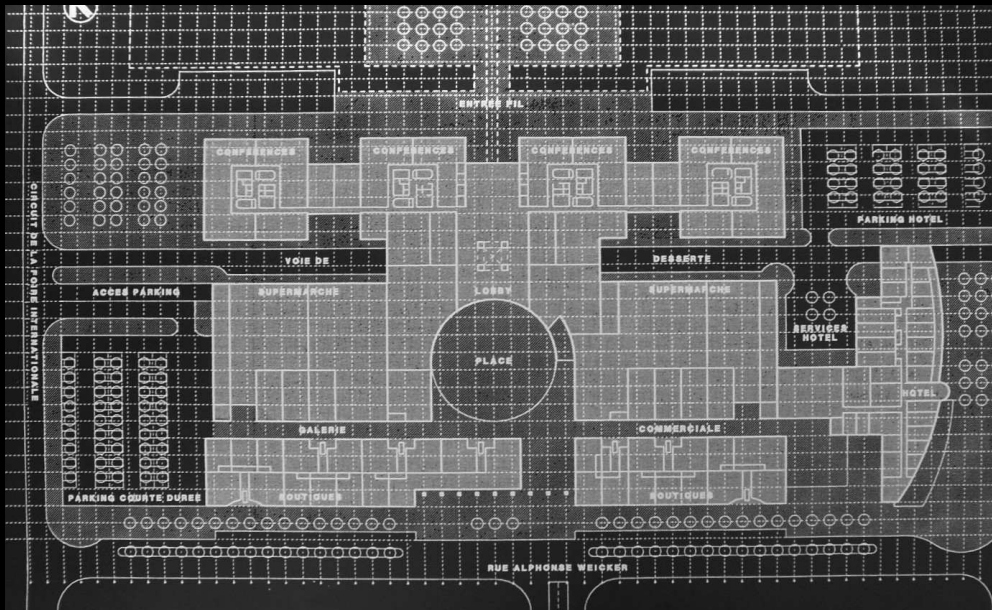
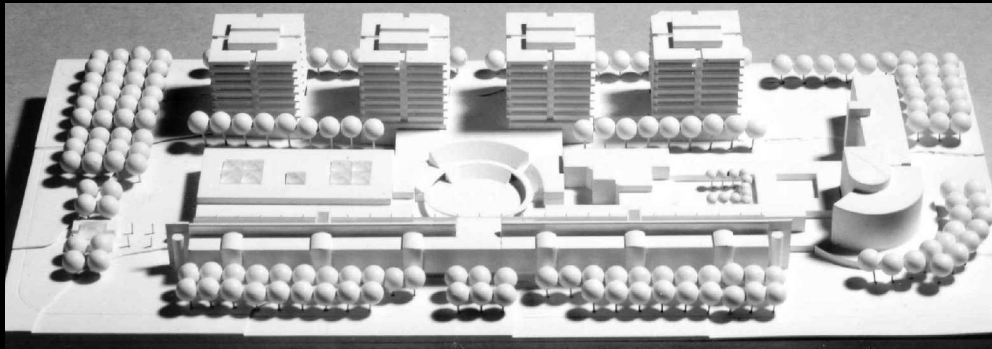


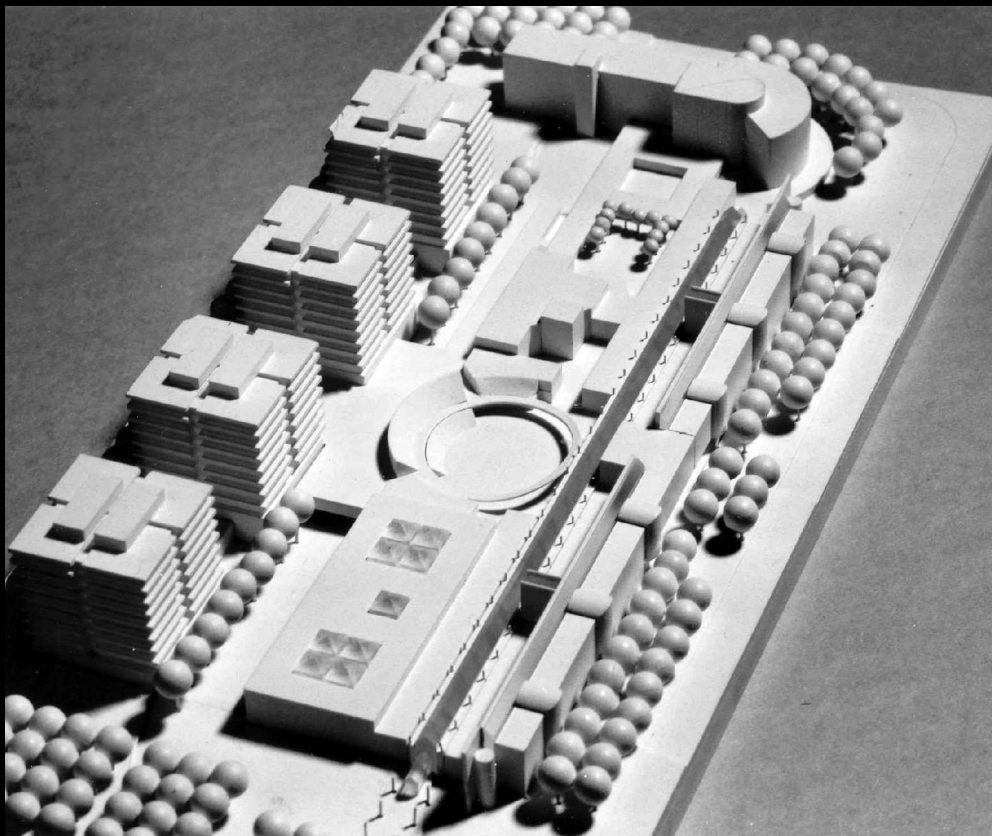






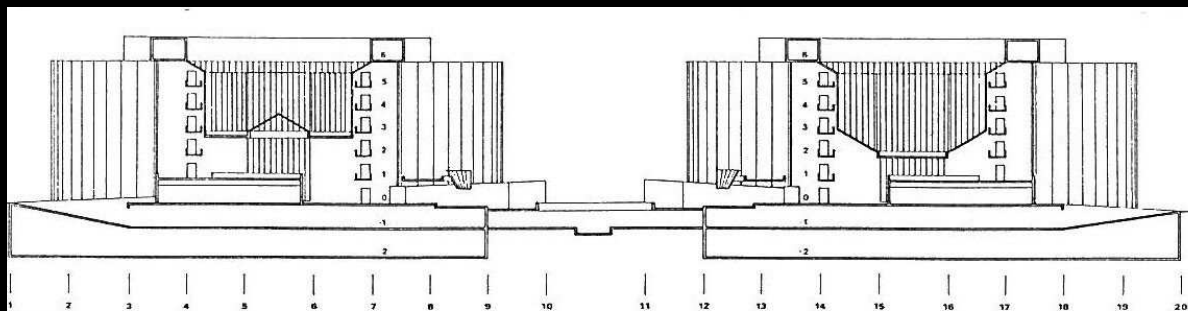
JEAN PETIT
ARCHITECTES.
A.



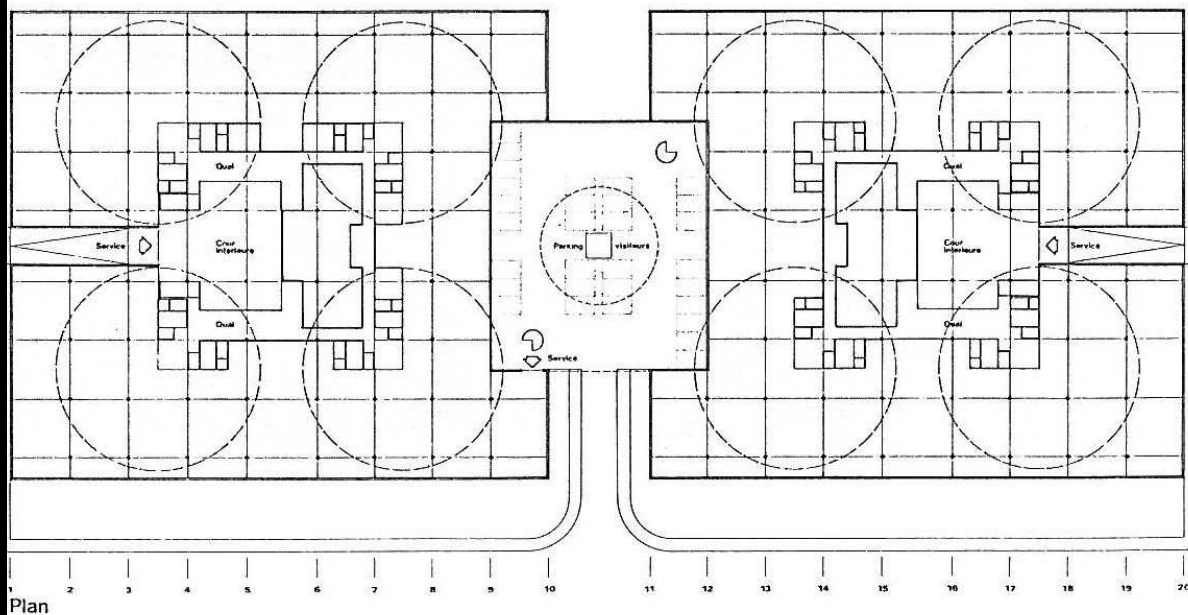


JEAN PETIT

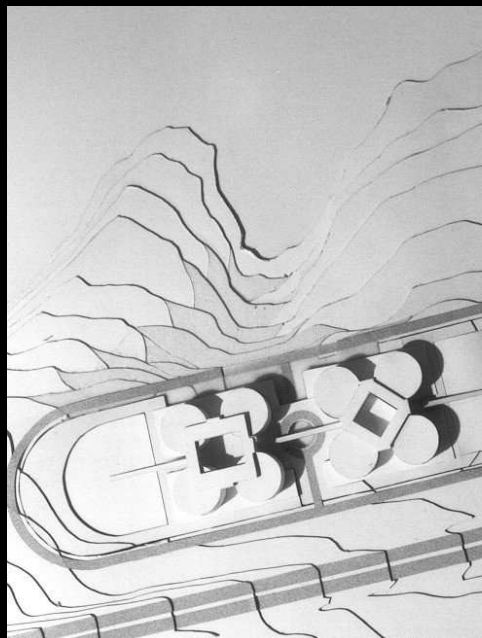
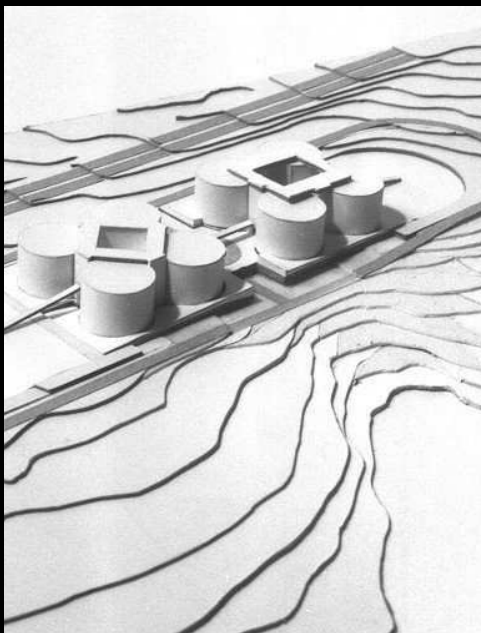
ARCHITECTES.



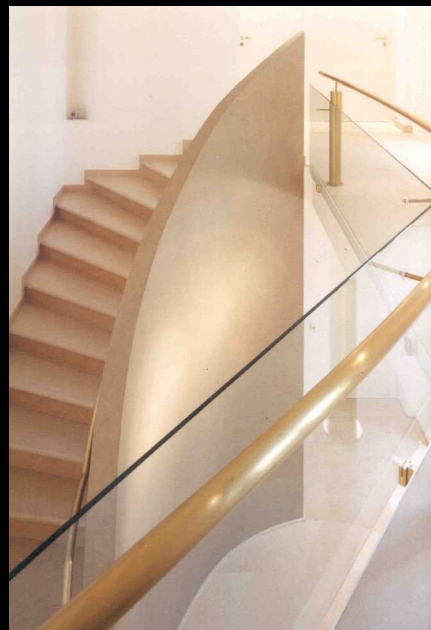
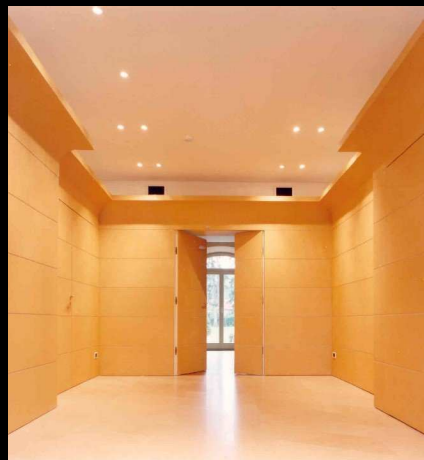
Coupe



Plan



JEAN PETIT
ARCHITECTES.
A.

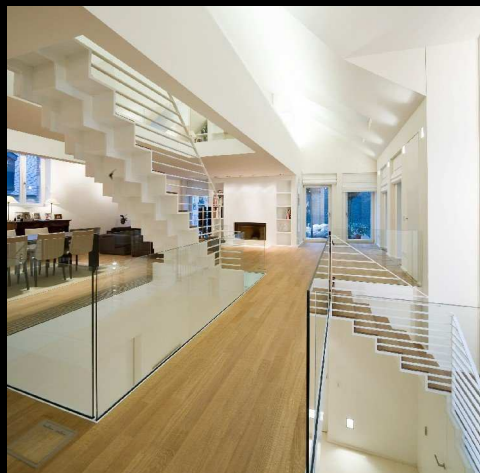
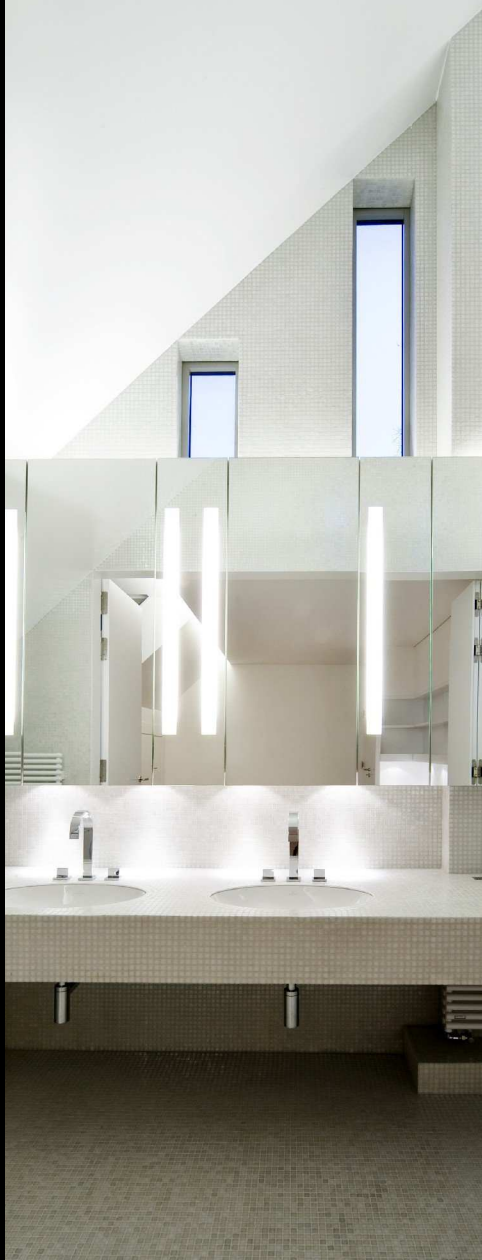




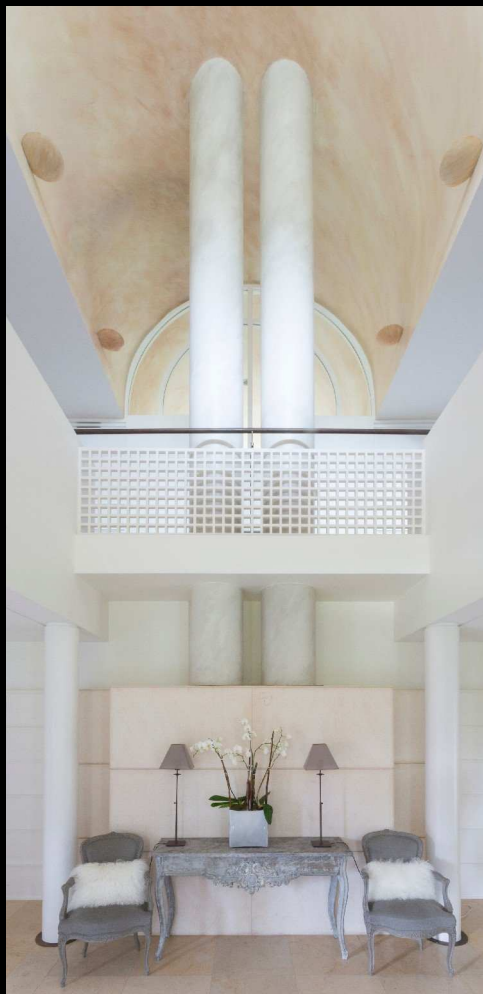
JEAN PETIT
ARCHITECTES.
A.











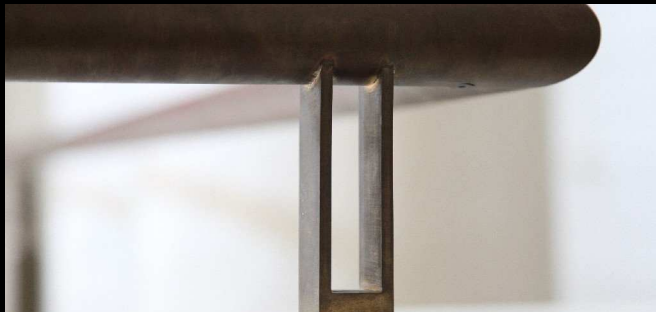


JEAN PETIT
ARCHITECTES.
A.



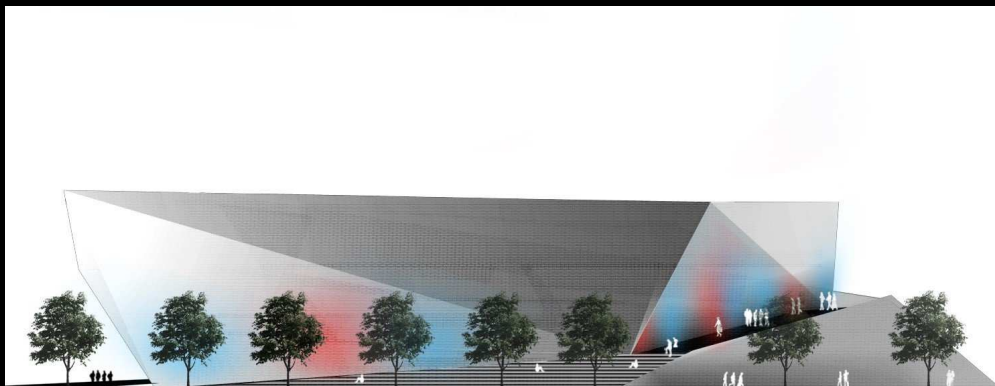
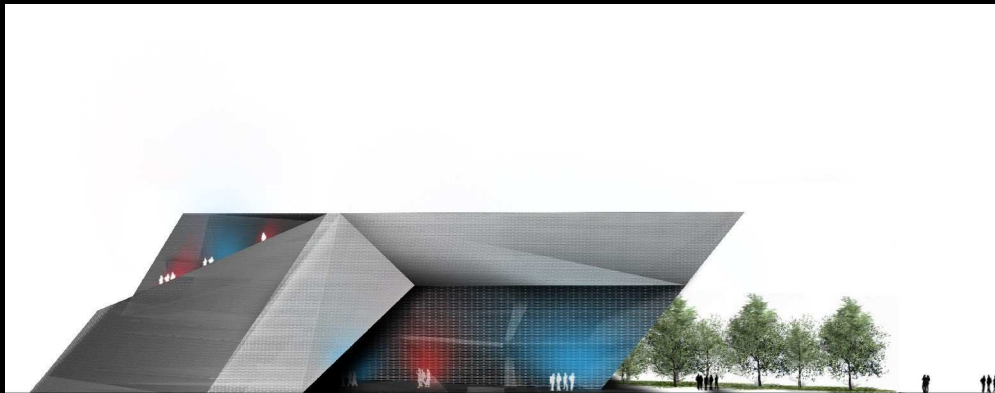


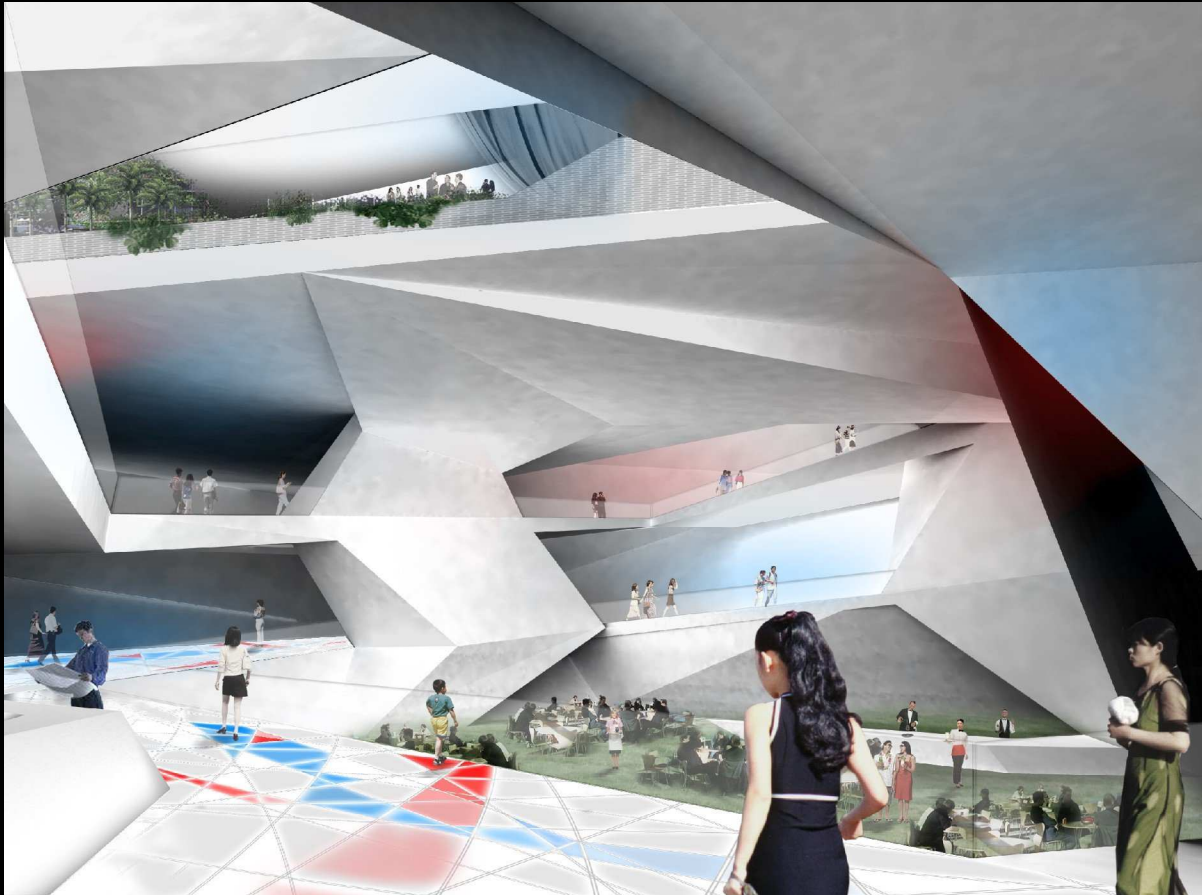
JEAN PETIT
ARCHITECTES.
A.

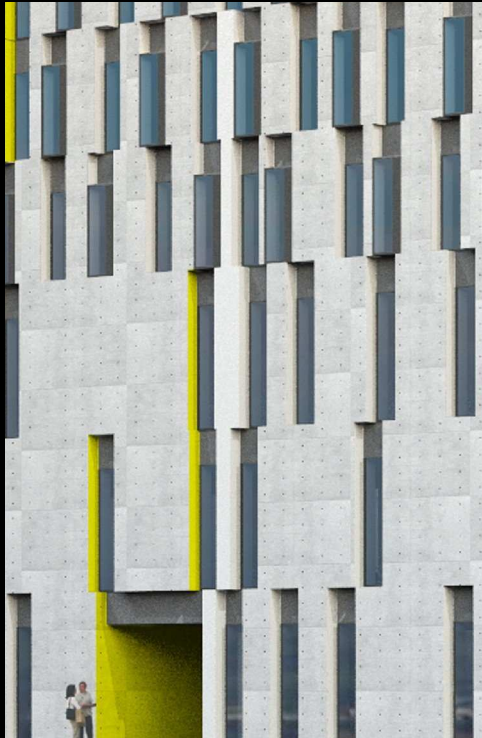




JEAN PETIT
ARCHITECTES.
A.

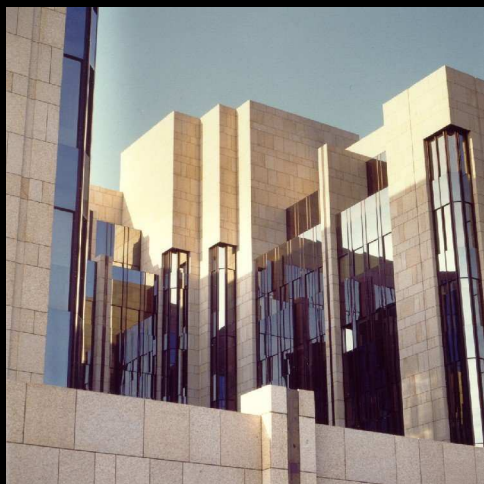


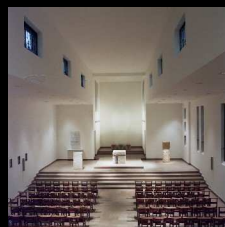
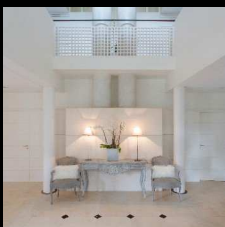
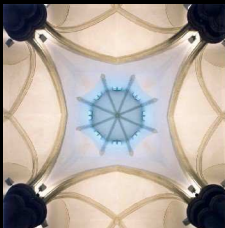
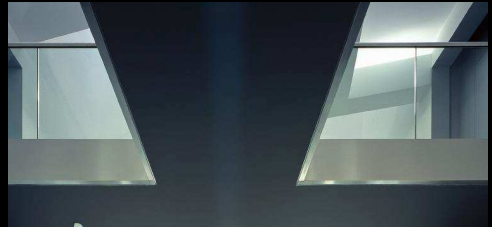






JEAN PETIT
ARCHITECTES.
A.





CREDITS & DATA

- p. 4-5 Chamber of Commerce of the Grand-Duchy of Luxembourg. Kirchberg, Luxembourg. 57 000 sqm. Collaboration with Claude Vasconi, Paris.
- p. 6-7 Administrative Bldg DEXIA-RBC. Belval. 67 000 sqm. Collaboration with Vasconi Associates Luxembourg.
 - p. 8-9 Corporate Offices. Luxembourg City. 5 500 sqm.
- p. 10-11 Headquarters Banque Internationale à Luxembourg. 75 000 sqm. Luxembourg City. Collaboration with Marc Ewen, Théo Worré, Luxembourg.
- p. 12-13 Banking Hall in restored 19th century townhouse. Banque Générale du Luxembourg. Luxembourg City.
 - p. 14-15 Headquarters. Arcelor-Mittal. Renovation. Luxembourg City
- p. 16-17 Limpertsberg Residences, 10 bldgs with approx. 10 condominiums each. Limpertsberg, Luxembourg. 10 x 1,660 sqm.
 - p. 18-19 New Town Center, Lux-Kirchberg. 240,000 sqm. Feasibility study.
- p. 20-21 Headquarters Banque Générale du Luxembourg. 80 000 sqm. Kirchberg, Luxembourg. Feasibility study.
- p. 22-23 Private Residence. Refurbishment & restoration of 17th-19th c. complex. Rosport.
 - p. 24-25 City Condominium. Interior. Luxembourg City.
- p. 26-27 Private Residence. Interior views. Grund, Luxembourg. 940 sqm.
 - p. 28-29 Private House. Interior views. Bereldange. 660 sqm.
- p. 30-31 Private Residence. Refurbishment & extension. Lux-Limpertsberg.
 - p. 32-33 Residences. Grund, Moutfort, Ehnen.
- p. 34-35 Luxembourg National Pavilion at Shanghai World Exhibition 2010. Competition project, second prize.
- p. 36-37 Luxembourg University Engineering School. 12 000 sqm. Belval. Competition project. second prize.

www.jean-petit.lu

